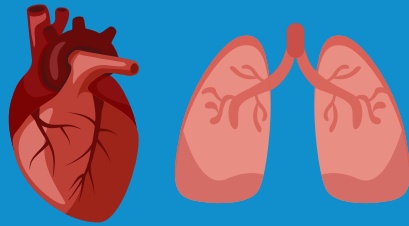
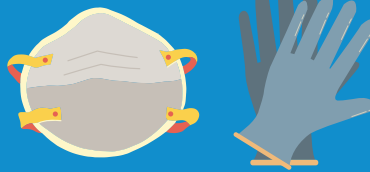


# Ash Clean Up After A Fire



People with heart or lung conditions should not help

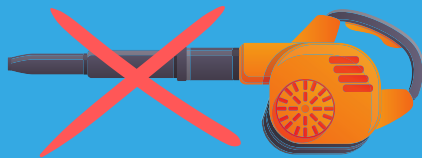
## Caution



Use an N-95 protective mask and avoid skin contact with ash



Consult with hazmat experts and get help before cleaning up burned structures



Do not use a leaf blower

## Control

Use a household vacuum or shop vacuum **with a HEPA filter**



Gently sweep, then mop or wipe with a damp cloth

## Contain

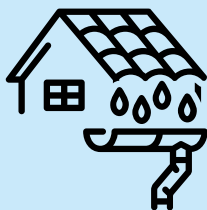


Place in regular trash

Hose lightly to conserve water. Wet ash will not hurt plants



In large amounts, ash can be harmful for the environment



## Capture



If washing roof and driveway areas, direct downspouts and runoff away from storm drains and into landscape areas! Wet ash will not hurt plants